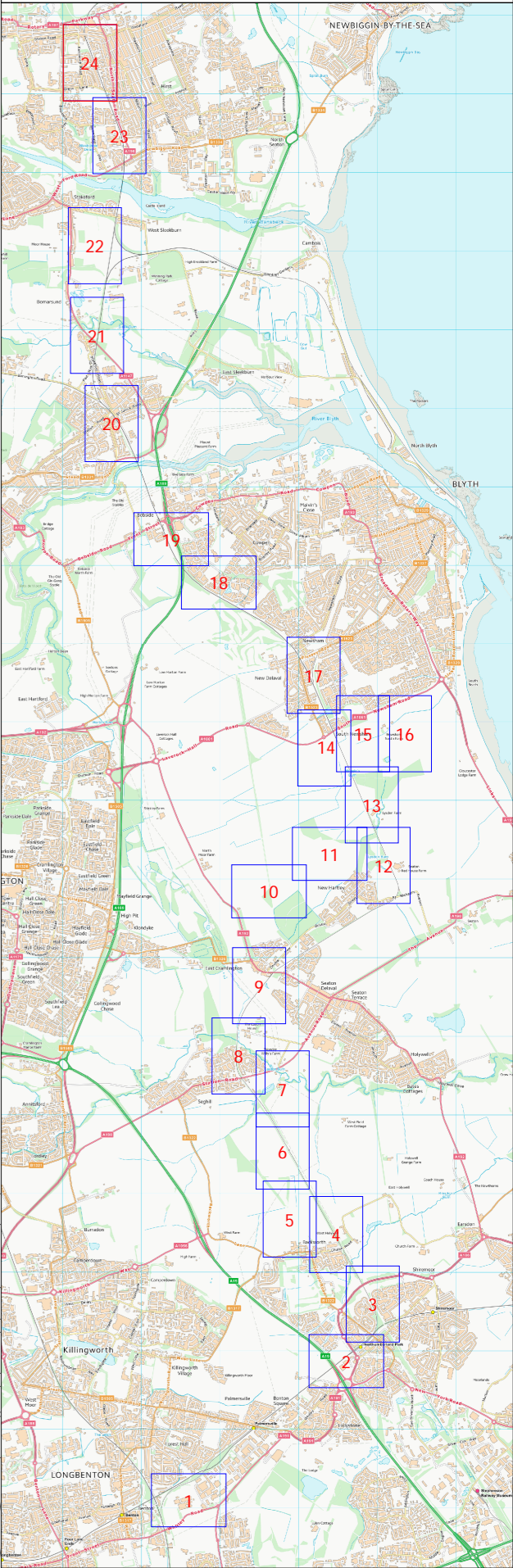


Transport and Works Act 1992
The Northumberland Line Order
County of Northumberland

Land and Works Plan

Sheet No. 24 of 24

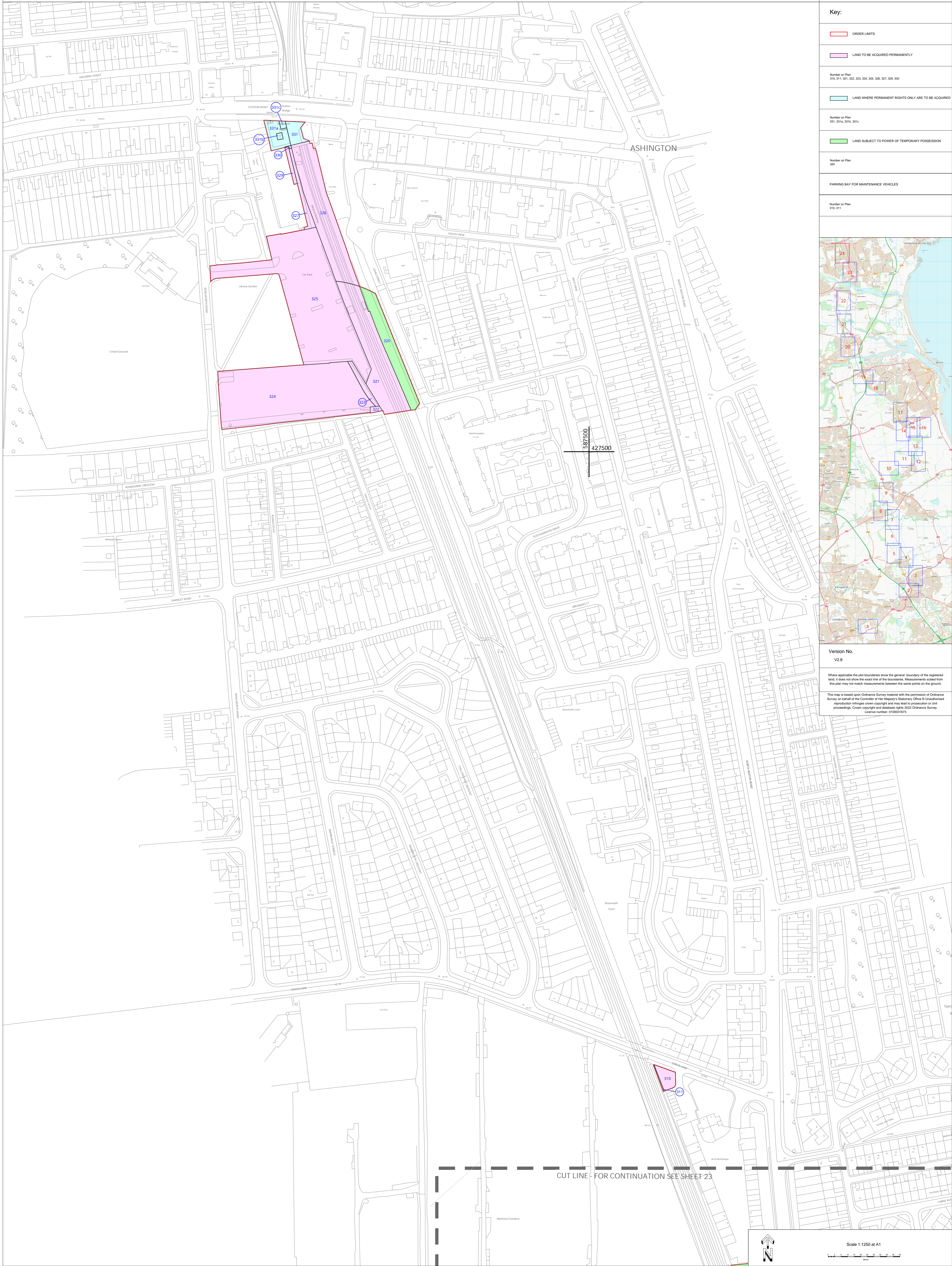
Key:
<div></div> ORDER LIMITS
<div></div> LAND TO BE ACQUIRED PERMANENTLY
Number on Plan 310, 311, 321, 322, 323, 324, 325, 326, 327, 328, 330
<div></div> LAND WHERE PERMANENT RIGHTS ONLY ARE TO BE ACQUIRED
Number on Plan 331, 331a, 331b, 331c
<div></div> LAND SUBJECT TO POWER OF TEMPORARY POSSESSION
Number on Plan 320
PARKING BAY FOR MAINTENANCE VEHICLES
Number on Plan 310, 311



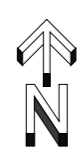
Version No.
V2.8

Where applicable the plot boundaries show the general boundary of the registered land, it does not show the exact line of the boundaries. Measurements scaled from this plan may not match measurements between the same points on the ground.

This map is based upon Ordnance Survey material with the permission of Ordnance Survey on behalf of the Controller of Her Majesty's Stationery Office. Unauthorised reproduction infringes crown copyright and may lead to prosecution or civil proceedings. Crown copyright and database rights 2022 Ordnance Survey. Licence number: 1000016193



CUT LINE - FOR CONTINUATION SEE SHEET 23



Scale 1:1250 at A1